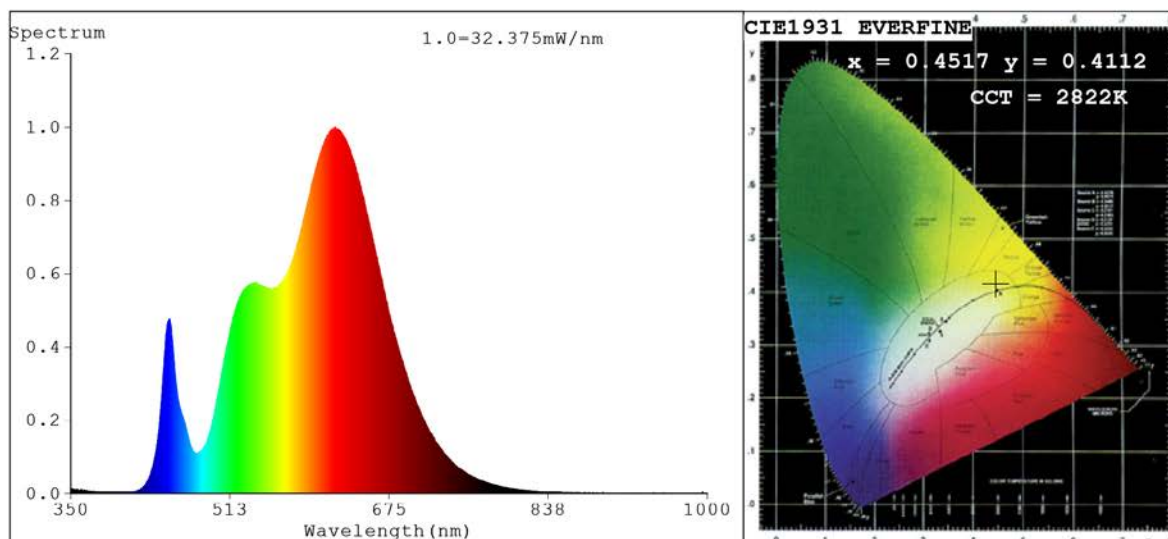


Spectrum Test Report



Color Parameters:

Chromaticity Coordinate: $x=0.4517$ $y=0.4112$ $u'=0.2570$ $v'=0.5264$
 CCT=2822K(Duv=0.0010) Dominant WL:Ld =583.3nm Purity=59.0%
 Ratio:R=26.2% G=71.8% B=2.0%;;Peak WL:Lp=619.7nm FWHM=156.7nm
 Render Index:Ra=94.4 CRI=90.9 TM30:Rf=91 Rg=102
 R1 =97 R2 =96 R3 =93 R4 =95 R5 =96 R6 =96 R7 =94
 R8 =86 R9 =65 R10=89 R11=92 R12=80 R13=98 R14=95 R15=92

Photo Parameters:

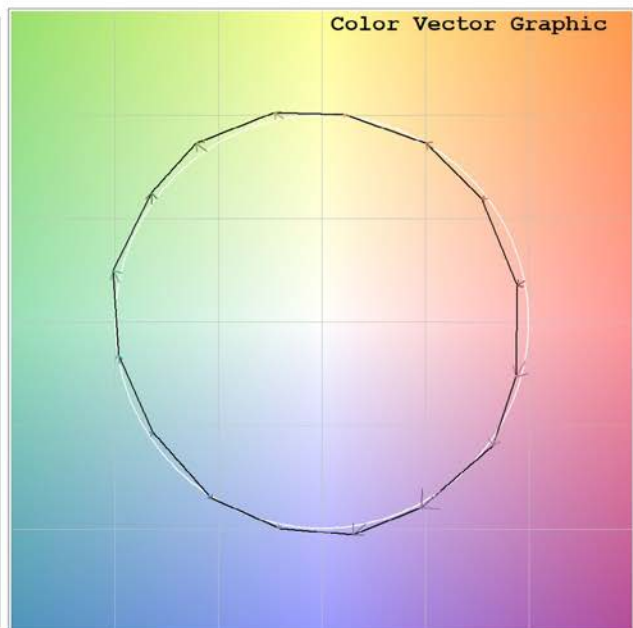
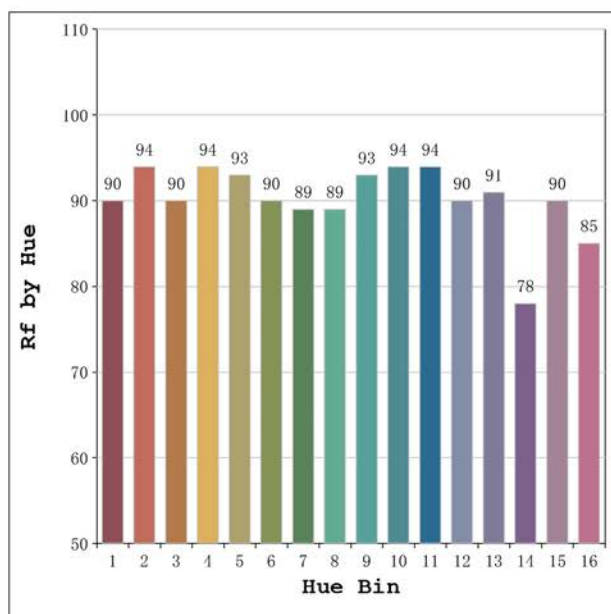
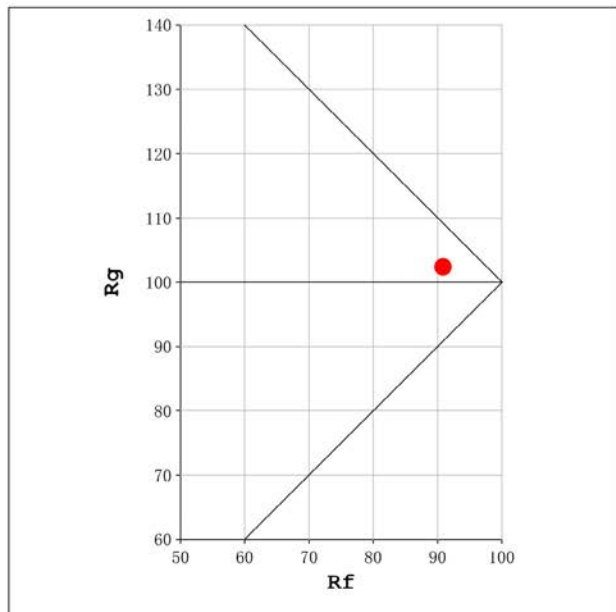
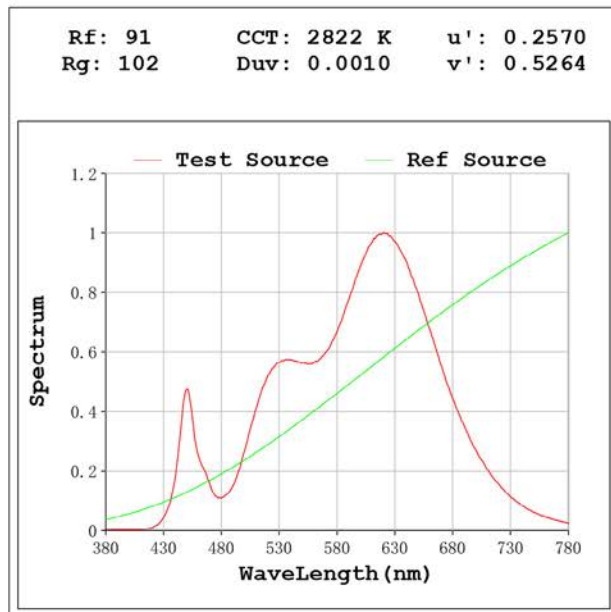
Flux = 1389 lm Eff. : 92.48 lm/W Fe = 4.727 W

Electrical parameters:

V = 23.998 V I = 0.6257 A P = 15.02 W PF = 1.000

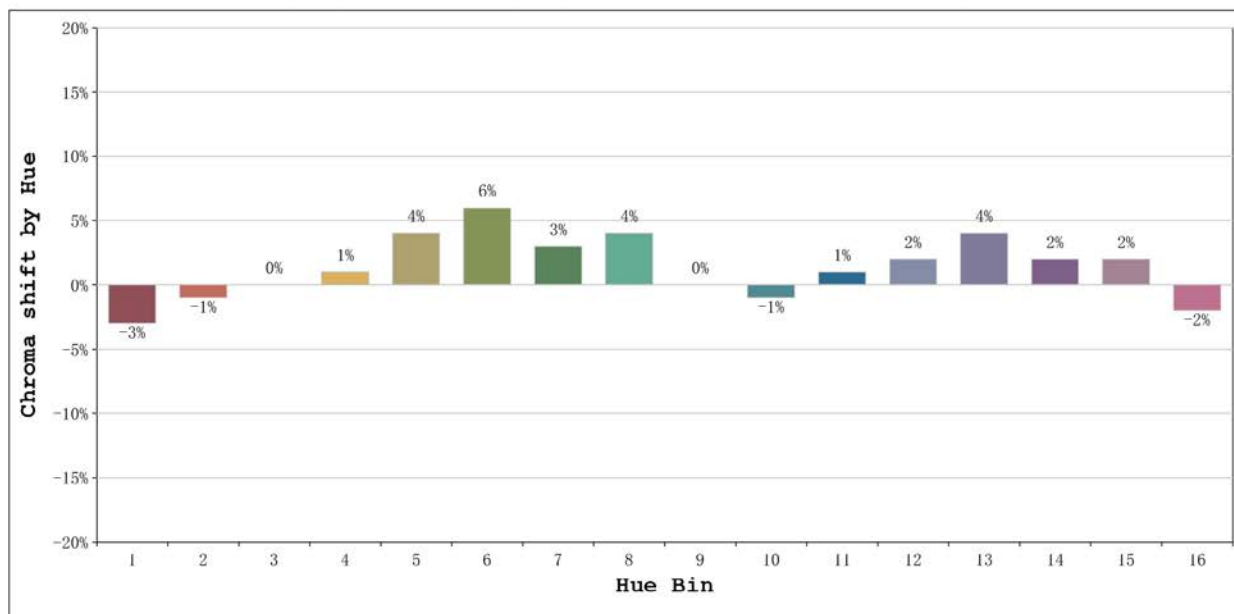
Status: Integral T = 831 ms Ip = 44932 (69%)

Model:Ecoled Élite 15 Gold 2800	Number: 31.172
Tester:Sergio Carneros	Date:2025-02-12 14:59:40
Temperature:20Deg	Humidity:50%
Manufacturer:Luz Negra	Remarks:100cm de tira flexible



Model:Ecoled Élite 15 Gold 2800
 Tester:Sergio Carneros
 Temperature:20Deg
 Manufacturer:Luz Negra

Number: 31.172
 Date:2025-02-12 14:59:40
 Humidity:50%
 Remarks:100cm de tira flexible



			Graphic shift(%)	
Hue Bin	Hue Angle	Rf	Chroma	Hue
1	0.0° - 22.5°	90	-3	-1
2	22.5° - 45.0°	94	-1	2
3	45.0° - 67.5°	90	0	4
4	67.5° - 90.0°	94	1	2
5	90.0° - 112.5°	93	4	4
6	112.5° - 135.0°	90	6	2
7	135.0° - 157.5°	89	3	-3
8	157.5° - 180.0°	89	4	-4
9	180.0° - 202.5°	93	0	-3
10	202.5° - 225.0°	94	-1	0
11	225.0° - 247.5°	94	1	2
12	247.5° - 270.0°	90	2	2
13	270.0° - 292.5°	91	4	-6
14	292.5° - 315.0°	78	2	-12
15	315.0° - 337.5°	90	2	-5
16	337.5° - 360.0°	85	-2	-7

Model:Ecoled Élite 15 Gold 2800 Number: 31.172
 Tester:Sergio Carneros Date:2025-02-12 14:59:40
 Temperature:20Deg Humidity:50%
 Manufacturer:Luz Negra Remarks:100cm de tira flexible